

## TE100-DM24

### 24-port 10/100Mbps Dual Speed SNMP Stackable Master Hub

The TE100-DM24 dual speed SNMP stackable master hub provides a phenomenal level of flexibility and ease of use for migration to higher bandwidth network environments. Each port auto-senses between 10Mbps Ethernet and 100Mbps Fast Ethernet. Once the port speed is determined, the hub creates independent segments for the 10Mbps and 100Mbps ports. Linking the 10Mbps and 100Mbps segments together is achieved through an optional switch module.



The optional TE100-DSM switch module can be installed in any hub in the stack, making it possible to transparently bridge between 10Mbps and 100Mbps segments. In a managed hub stack, more than one TE100-DSM module can be used to provide automatic redundancy.

The TE100-DM24 is a SNMP Master hub which will control up to four TE100-DS24 stackable hubs via integrated management ports. A stack of TE100-DM24/DS24 hubs operates as a class II Fast Ethernet repeater, allowing linkage to another Class II Fast Ethernet Stack in the same collision domain.

One 100Base-TX switched port module and one switched 100Base-FX port are also available, in addition to the TE100-DSM switch module, for greater configuration flexibility.

#### FEATURES

- Plug and Play installation with automatic port configuration
- Supports 24 10/100Mbps auto-sensing and auto-negotiation ports
- Uplink port provides easy expansion to another hub
- Stackable to five units for a total of 120 ports
- Scalable expansion of up to two stacks for a total 238 ports
- One management hub) controls an entire stack of dual speed hubs (max. four hubs)
- TE100-DM24 stacks can make use of additional switch modules for redundancy
- EIA-19" rack mountable
- High visibility LED indicators provide status for each port
- Bandwidth utilization LED array for traffic volume display
- Automatic Hub ID assignment and front panel display
- Built-in auto-partitioning instantly isolates network failures
- One RS-232 port allows local terminal access to hub configuration, diagnosis, and firmware upgrade
- Slide-in switch module allows bridging between 10Mbps and 100Mbps segments, just one switch module is required for entire stack
- Slide-in switch module for one 100Base-TX connections or one 100Base-FX connection
- 5 Year Warranty

#### BENEFITS

- **Upgradable:**  
Ethernet workgroups can be upgraded to Fast Ethernet without changing hubs.
- **Expandable:**  
Connect up to 120 users per stack. Also stackable with TE100-D16s hubs.
- **Flexible:**  
All 10 and 100Mbps users can exist on one hub.
- **Cost Effective:**  
Provides 10Mbps and 100Mbps SNMP stackable hub, and 10/100Mbps switch functionality in one unit.
- **Performance:**  
Full 100Mbps connectivity significantly boosts network performance.

# TE100-DM24

## 24-port 10/100Mbps Dual Speed SNMP Stackable Master Hub

### SPECIFICATIONS

#### Standards:

- IEEE 802.3u 100Base-TX/100Base-FX, and IEEE 802.3 10Base-T

#### Protocol:

- CSMA/CD

#### Speed:

- 10Mbps for 10Base-T
- 100Mbps for 100Base-TX

#### Cabling:

- CAT 3, 4, 5 UTP/STP for 10Base-T
- CAT 5 UTP/STP for 100Base-FX 62.5/125 micron multi mode SC fiber (2km)

#### Daisy-Chain Port:

- SCSI 50 pin x 2

#### Console Port:

- DB-9 (9 pin) DCE RS-232 x 1

#### Power:

- Internal Power Supply, (100 - 240V, 50/60Hz)

#### LED's:

- Per Hub: Power, Collision (10, 100) Slot 1 or 2, Hub ID, Bandwidth Utilization %, Console and SNMP
- Per Port: Link/Rx, Auto Partition, Disable, Port Speed (10Mbps, 100Mbps)

#### Dimensions:

- 441 x 237 x 55 mm  
17.36" x 9.33" x 2.17" (L x W x H)

#### Weight:

- 3.87 kg / 8.53 lb.

#### Temperature:

- Operating: -10° to 55° C / 14° to 131°F
- Storage: -25° to 80° C / -13° to 176°F

#### Humidity:

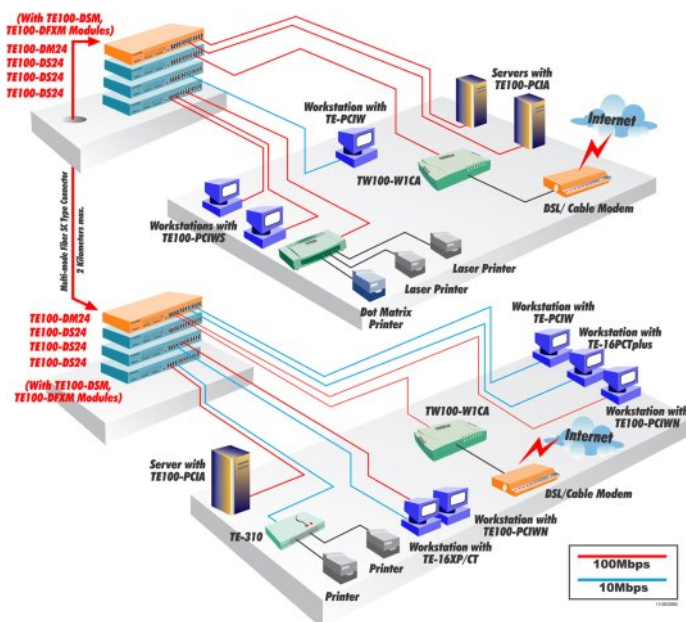
- 5% to 95% (non-condensing)

#### Certification:

- FCC, UL, VCCI, CSA, C-tick, TUV, CE



### NETWORKING SOLUTIONS



**To Order Please Call:**  
**1-888-326-6061**

### PRODUCT INFORMATION

- ❖ **TE100-DM24:** 24-port 10/100Mbps dual speed SNMP stackable Master hub
- ❖ **TE100-DS24:** 24-port 10/100Mbps dual speed stackable hub
- ❖ **TE100-DSM:** 10/100Mbps switch slide-in module
- ❖ **TE100-DFXM:** Switch 100Base-FX slide-in module
- ❖ **TE100-DTXM:** Switch 100Base-TX slide-in module

### ORDERING INFORMATION

**TRENDware International, Inc.**  
3135 Kashiwa Street  
Torrance, CA. 90505. USA  
Tel: 310-891-1100  
Fax: 310-891-1111  
Web: [www.trendnet.com](http://www.trendnet.com)  
Email: [sales@trendware.com](mailto:sales@trendware.com)

**TRENDnet**  
TRENDware, USA