

TE-16XP *High Performance Ethernet Adapters*

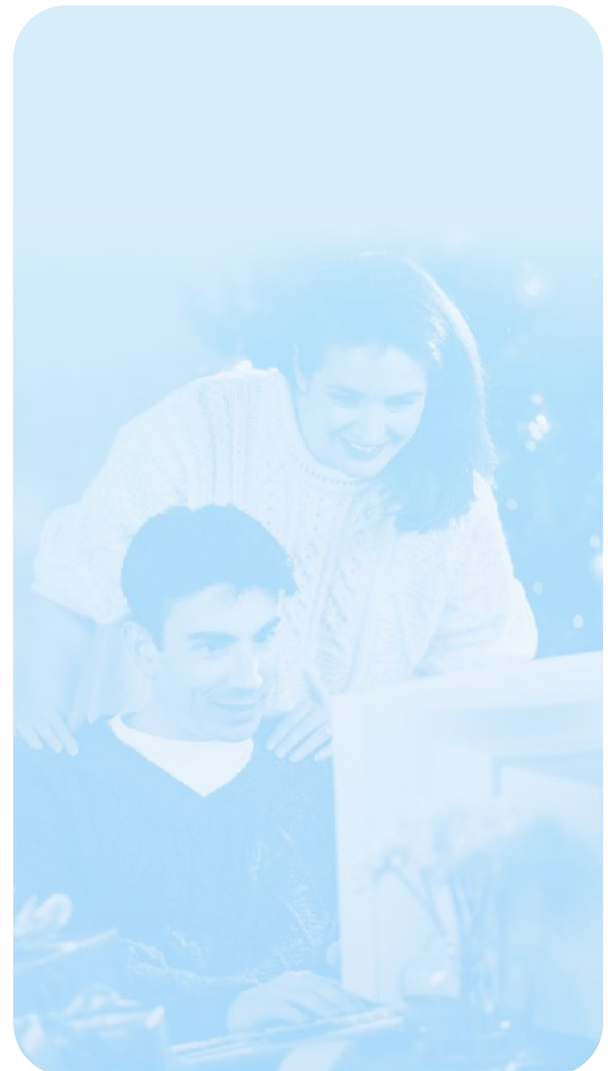
The TE16XP Plus Series High Performance Ethernet adapter features NE2000 compatibility, jumperless configuration, easy to use configuration/diagnostic software, and drivers for all popular network operating systems. In addition, industry standard NE2000 compatibility ensures operation with virtually all software in use today.

The TE16XP Plus Series outperforms every other card tested in it's price range. Backed by a 5 year warranty, TRENDware's TE16XP Plus Series is the best high performance Ethernet adapter available at any price.



FEATURES

- ...→ No Jumpers or Switches, Software Configurable
- ...→ Fully NE2000 Compatible
- ...→ Diagnostic Software for Conflict Resolution
- ...→ External LED Indicators (PWR/TX, LINK/RX, COL/JAB)
- ...→ 16KB On-Board RAM buffer
- ...→ Boot ROM Socket
- ...→ 10 Mbps Transfer Rate
- ...→ 5 Year Warranty



TE-16XP

High Performance Ethernet Adapters

SPECIFICATIONS

Standards:

- IEEE 802.3 10Base-2 & 10Base-T

IRQ's Supported:

- 3*, 4, 5, 9, 10, 11, 14

I/O Base Address:

- 200, 220, 240, 260, 300*, 320, 340, 360

Boot ROM Size:

- 8K*, 16K

Boot ROM Address:

- C0000h, C4000h, C8000h, CC000h, D0000h*, D4000h, D8000h, DC000h

(* Factory Preset)



PRODUCT INFORMATION

- **TE-16XP+/CT:** ISA Ethernet Adapter with BNC & RJ-45 Connectors
- **TE-16XP+/T:** ISA Ethernet Adapter with RJ-45 Connector
- **TE-16R:** Boot ROM for Novell Netware and Microsoft Windows NT

ORDERING INFORMATION



TRENDware International, Inc.
3135 Kashiwa Street
Torrance, CA. 90505. USA
Tel: 310-891-1100
Fax: 310-891-1111
Web: www.TRENDNET.com
Email: sales@trendware.com

**To Order Please Call:
1-888-326-6061**