



Quick Installation Guide



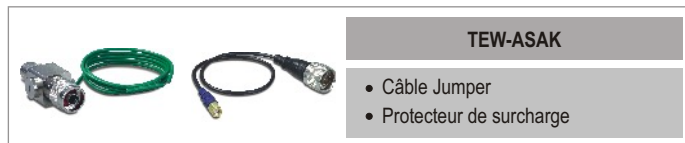
Indoor / Outdoor Antenna,
Antenna Cable & Surge Arrestor

Table of Contents

Français	1
1. Installation de l'antenne extérieure	1
2. Installation du protecteur de surcharge	4
3. Toile isolante pour installation extérieure	5
4. Installation de l'antenne intérieure	6

1. Installation de l'antenne extérieure

Avant de procéder à l'installation, assurez-vous de disposer des produits nécessaires et que toutes les boîtes sont complètes.



L'une des antennes suivantes:



1. Débranchez l'antenne dipôle par défaut du point d'accès intérieur ou de votre routeur.



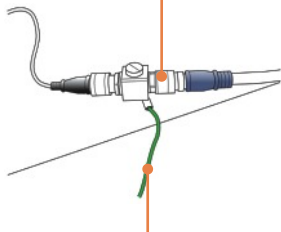
2. Fixez le manchon bleu (SMA inversé) de câble Jumper à votre périphérique Wi-Fi.



3. Branchez le manchon noir (de type N) du câble Jumper au protecteur de surcharge. *Veillez vous référer a la section No.2 "Installation de l'antenne intérieure")*

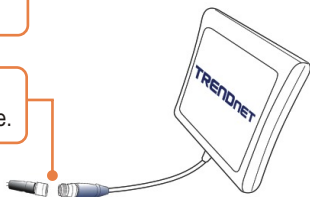


4. Branchez la fiche restante du protecteur de surcharge au manchon bleu (de type N) du câble de l'antenne (TEW-L406/TEW-L412)

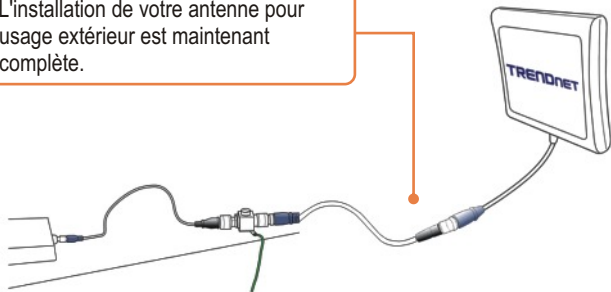


5. Branchez le câble vert sur un dispositif à la terre.
ex.
1. Tige de terre
2. Syst. électr. relié à la terre
3. Bâtiment

6. Branchez le manchon noir restant (de type N) du câble d'antenne à l'antenne.

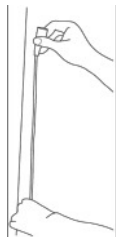


7. L'installation de votre antenne pour usage extérieur est maintenant complète.



2. Installation du protecteur de surcharge

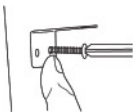
1. Avant d'installer l'antenne, assurez-vous que le câble extérieur à faibles pertes (TEW-L406/TEW-L412) est assez long pour atteindre le point d'accès ou le routeur. Fixez le manchon bleu de l'adaptateur de câble au périphérique Wi-Fi (SMA inversé) et le manchon noir (de type N) de l'adaptateur de câble au protecteur de surcharge.



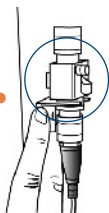
2. Enlevez la patte métallique de type L et indiquez l'endroit de la fixation sur le mur.



3. Vissez-le au mur.



4. Positionnez le protecteur dans le support.



Mettez la rondelle



Serrez l'écrou



3. Toile isolante pour installation extérieure

Si votre protecteur de surcharge est installé à l'extérieur, n'oubliez pas d'entourer les deux prises avec la toile isolante fournie.



4. Installation de l'antenne intérieure

Avant de procéder à l'installation, assurez-vous de disposer des produits nécessaires et que toutes les boîtes sont complètes.



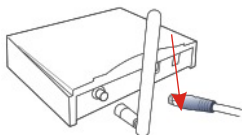
L'une des antennes:



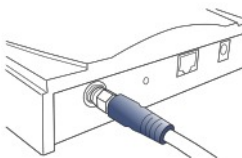
Remarque : Les antennes intérieures ci-dessous sont fournies avec les câbles ou se branchent directement à votre périphérique Wi-Fi. Aucun autre câble n'est nécessaire:



1. Débranchez l'antenne dipôle du point d'accès ou de votre routeur.



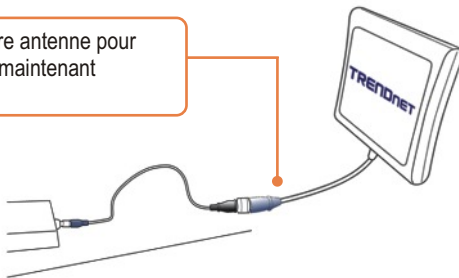
2. Fixez le manchon bleu (SMA inversé) du câble intérieur (TEW-L202/TEW-L208) directement sur le périphérique Wi-Fi.



3. Branchez le manchon noir restant (de type N) du câble d'antenne au manchon bleu (de type N) de l'antenne.



4. L'installation de votre antenne pour usage intérieur est maintenant complète.



Limited Warranty

TRENDnet warrants its products against defects in material and workmanship, under normal use and service, for the following lengths of time from the date of purchase.

TEW-ASAK, TEW-L202, TEW-L208, TEW-L406, TEW-L412 - 3 Year Warranty
TEW-AO08O, TEW-AO10O, TEW-AO09D, TEW-AO14D, TEW-AO19D - 3 Year Warranty

If a product does not operate as warranted above during the applicable warranty period, TRENDnet shall, at its option and expense, repair the defective product or part, deliver to customer an equivalent product or part to replace the defective item, or refund to customer the purchase price paid for the defective product. All products that are replaced will become the property of TRENDnet. Replacement products may be new or reconditioned.

TRENDnet shall not be responsible for any software, firmware, information, or memory data of customer contained in, stored on, or integrated with any products returned to TRENDnet pursuant to any warranty.

There are no user serviceable parts inside the product. Do not remove or attempt to service the product by any unauthorized service center. This warranty is voided if (i) the product has been modified or repaired by any unauthorized service center, (ii) the product was subject to accident, abuse, or improper use (iii) the product was subject to conditions more severe than those specified in the manual.

Warranty service may be obtained by contacting TRENDnet office within the applicable warranty period for a Return Material Authorization (RMA) number, accompanied by a copy of the dated proof of the purchase. Products returned to TRENDnet must be pre-authorized by TRENDnet with RMA number marked on the outside of the package, and sent prepaid, insured and packaged appropriately for safe shipment.

WARRANTIES EXCLUSIVE: IF THE TRENDnet PRODUCT DOES NOT OPERATE AS WARRANTED ABOVE, THE CUSTOMER'S SOLE REMEDY SHALL BE, AT TRENDnet'S OPTION, REPAIR OR REPLACEMENT. THE FOREGOING WARRANTIES AND REMEDIES ARE EXCLUSIVE AND ARE IN LIEU OF ALL OTHER WARRANTIES, EXPRESSED OR IMPLIED, EITHER IN FACT OR BY OPERATION OF LAW, STATUTORY OR OTHERWISE, INCLUDING WARRANTIES OF MERCHANTABILITY AND FITNESS FOR A PARTICULAR PURPOSE. TRENDnet NEITHER ASSUMES NOR AUTHORIZES ANY OTHER PERSON TO ASSUME FOR IT ANY OTHER LIABILITY IN CONNECTION WITH THE SALE, INSTALLATION MAINTENANCE OR USE OF TRENDnet'S PRODUCTS.

TRENDnet SHALL NOT BE LIABLE UNDER THIS WARRANTY IF ITS TESTING AND EXAMINATION DISCLOSE THAT THE ALLEGED DEFECT IN THE PRODUCT DOES NOT EXIST OR WAS CAUSED BY CUSTOMER'S OR ANY THIRD PERSON'S MISUSE, NEGLIGENCE, IMPROPER INSTALLATION OR TESTING, UNAUTHORIZED ATTEMPTS TO REPAIR OR MODIFY, OR ANY OTHER CAUSE BEYOND THE RANGE OF THE INTENDED USE, OR BY ACCIDENT, FIRE, LIGHTNING, OR OTHER HAZARD.

LIMITATION OF LIABILITY: TO THE FULL EXTENT ALLOWED BY LAW TRENDnet ALSO EXCLUDES FOR ITSELF AND ITS SUPPLIERS ANY LIABILITY, WHETHER BASED IN CONTRACT OR TORT (INCLUDING NEGLIGENCE), FOR INCIDENTAL, CONSEQUENTIAL, INDIRECT, SPECIAL, OR PUNITIVE DAMAGES OF ANY KIND, OR FOR LOSS OF REVENUE OR PROFITS, LOSS OF BUSINESS, LOSS OF INFORMATION OR DATE, OR OTHER FINANCIAL LOSS ARISING OUT OF OR IN CONNECTION WITH THE SALE, INSTALLATION, MAINTENANCE, USE, PERFORMANCE, FAILURE, OR INTERRUPTION OF THE POSSIBILITY OF SUCH DAMAGES, AND LIMITS ITS LIABILITY TO REPAIR, REPLACEMENT, OR REFUND OF THE PURCHASE PRICE PAID, AT TRENDnet'S OPTION. THIS DISCLAIMER OF LIABILITY FOR DAMAGES WILL NOT BE AFFECTED IF ANY REMEDY PROVIDED HEREIN SHALL FAIL OF ITS ESSENTIAL PURPOSE.

Governing Law: This Limited Warranty shall be governed by the laws of the state of California.

AC/DC Power Adapter, Cooling Fan, and Power Supply carry 1 Year Warranty

Certifications

This equipment has been tested and found to comply with FCC and CE Rules.

Operation is subject to the following two conditions:

- (1) This device may not cause harmful interference.
- (2) This device must accept any interference received. Including interference that may cause undesired operation.



Waste electrical and electronic products must not be disposed of with household waste. Please recycle where facilities exist. Check with you Local Authority or Retailer for recycling advice.



NOTE: THE MANUFACTURER IS NOT RESPONSIBLE FOR ANY RADIO OR TV INTERFERENCE CAUSED BY UNAUTHORIZED MODIFICATIONS TO THIS EQUIPMENT. SUCH MODIFICATIONS COULD VOID THE USER'S AUTHORITY TO OPERATE THE EQUIPMENT.

ADVERTENCIA

En todos nuestros equipos se mencionan claramente las características del adaptador de alimentación necesario para su funcionamiento. El uso de un adaptador distinto al mencionado puede producir daños físicos y/o daños al equipo conectado. El adaptador de alimentación debe operar con voltaje y frecuencia de la energía eléctrica domiciliar existente en el país o zona de instalación.



TRENDnet Technical Support

US • Canada

Toll Free Telephone: 1(866) 845-3673
24/7 Tech Support



Europe (Germany • France • Italy • Spain • Switzerland • UK)

Toll Free Telephone: +00800 60 76 76 67
English/Espanol - 24/7
Francais/Deutsch - 11am-8pm, Monday - Friday MET

Worldwide

Telephone: +(31) (0) 20 504 05 35
English/Espanol - 24/7
Francais/Deutsch - 11am-8pm, Monday - Friday MET

Product Warranty Registration

Please take a moment to register your product online.
Go to TRENDnet's website at <http://www.trendnet.com>

TRENDnet[®]
20675 Manhattan Place
Torrance, CA 90501
USA